

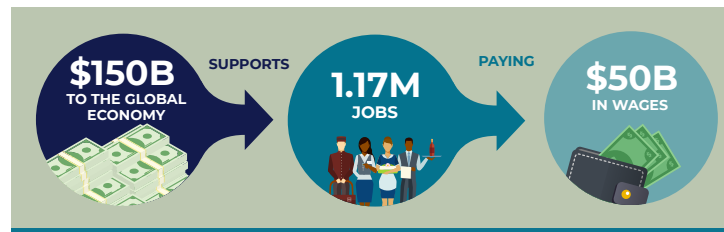


ECONOMIC IMPACT

The cruise industry is a vital artery for local and national economies around the world, supporting **1.17 million jobs** spanning a wide variety of sectors, including hospitality, aviation, agriculture, retail, entertainment, manufacturing, information services, health care and, of course, tourism.

- **Global cruise operations greatly benefit local and national economies.**

- » Globally, the cruise industry generates over \$150 billion in economic activity every year, supporting 1.17 million jobs paying more than \$50 billion in salaries and wages.
- » Economic contributions consist of direct expenditures by the cruise lines, as well as money spent onshore by both cruise passengers and crewmembers.
- » Common examples of onshore spending include shore excursions, souvenir shopping and other retail purchases, as well as pre- and post-cruise travel, such as airfare, ground transportation and hotels.
- » CLIA ocean-going cruise lines' direct expenditures totaled nearly \$68 billion in 2018.



- » The effects of the suspension are being felt across the world:
 - In the United States, each day of the suspension results in the loss of more than 600 jobs, and every 1% drop in cruising from U.S. ports results in 2000 jobs lost.
 - In Europe, each day of the suspension results in the loss of 800 jobs, and every 1% drop in cruising from European cities results in 3,500 jobs lost.
 - In the United Kingdom, each day of the suspension results in the loss of 140 jobs, and every 1% drop in cruising from the UK results in 530 jobs lost.

SUSPENSION OF OPERATIONS IMPACT



- **Sadly, the ongoing and voluntary suspension of cruise operations is having a detrimental impact on communities and families across the globe.**

- » Each day of the suspension of cruise operations results in the loss of approximately 2,500 jobs, and every 1% drop in worldwide cruising results in 9,100 jobs lost.
- » Should the suspension of operations continue through August, the worldwide impact will be \$64 billion, 428,000 jobs, and \$19 billion in wages lost.

- **When the time is right for cruise ships to sail again, the worldwide cruise community will be an important contributor to the global economic and societal recovery.**

- » Given the significance of cruising to global economies, a strong cruise community, coupled with a resurgence in tourism activity, will be critical to reigniting global economies.
- » People love to cruise. We are confident that cruisers will return to the seas as soon as it is safe to do so, just as they will return to restaurants, bars, movie theaters, airplanes, resorts and beyond.
- » When cruise ships do return to the seas, the cruise industry will play a vital role in putting people back to work across every sector that cruising supports and touches.